

# Membership Management | Overview

20/05/2025 1:36 pm AEST

## Overview

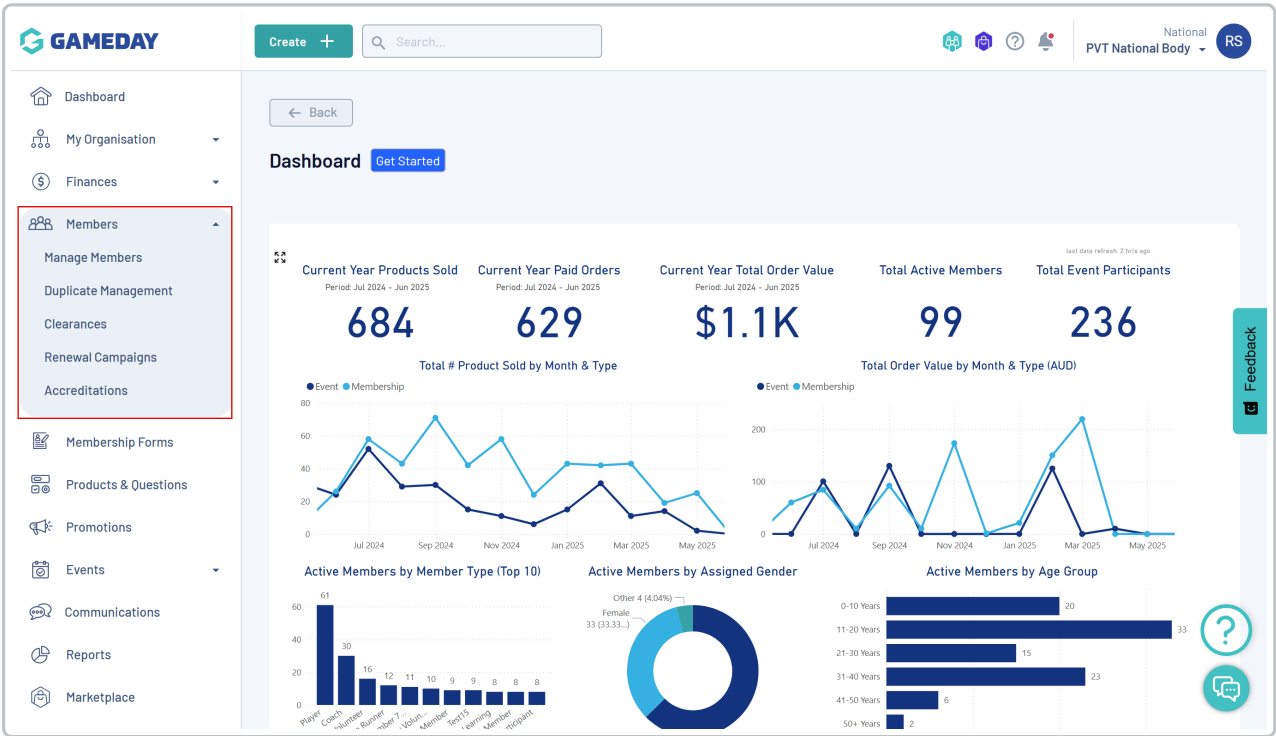
GameDay's **Members** module serves as a complete directory for your membership base and allows you to search, view, edit and manage all of your members in one place, whether they are currently registered with your organisation or not.

Having a firm grasp on your membership database opens up a huge range of opportunities to engage and communicate with your members, report on their information and characteristics, and keep track of how your members are interacting with your membership forms through GameDay.

The help resources outlined below will give you an introduction to various aspects of your membership database including navigating your member list, understanding individual member records, outlining the clearance/transfer facility and configuring your communication settings.

## Membership Management Features

To expand the Members section, click the **MEMBERS** option in the left-hand menu.



The **Members** menu includes the below features:

### Manage Members

Allows you to manage and communicate with all of your members in one area of the database. This section offers various features, including:

Member List - [Learn More](#)

Member Records - [Learn More](#)

Member Profile Portal - [Learn More](#)

### **Duplicate Management**

Allows you to review and merge any potential duplicate member profiles that may exist within your database.

[Learn More](#)

### **Clearances**

Allows you to manage the member transfer process within your hierarchy.

[Learn more](#)

### **Communications**

Allows you to pre-configure email templates and see communication history.

[Learn more](#)

### **Membership Renewal Reminders**

Allows you to create and send renewal registration reminder notifications to members to assist with your season rollovers

[Learn More](#)

### **Membership Payment Campaigns**

Allows you to create and send invoice notifications with a payment link to prompt members to complete payment for their membership renewals

[Learn More](#)

### **Accreditations**

Allows you to create and manage the assignment of custom accreditations

[Learn More](#)

---