

# Language & Accessibility Widget | Overview

16/06/2025 2:19 pm AEST

## Table of Contents

1. [Overview](#)
2. [Navigation](#)
3. [Accessibility Profiles](#)
4. [Individual Accessibility Tools](#)
5. [Changing Language](#)
6. [Resetting Settings](#)
7. [What's Next?](#)

## Overview

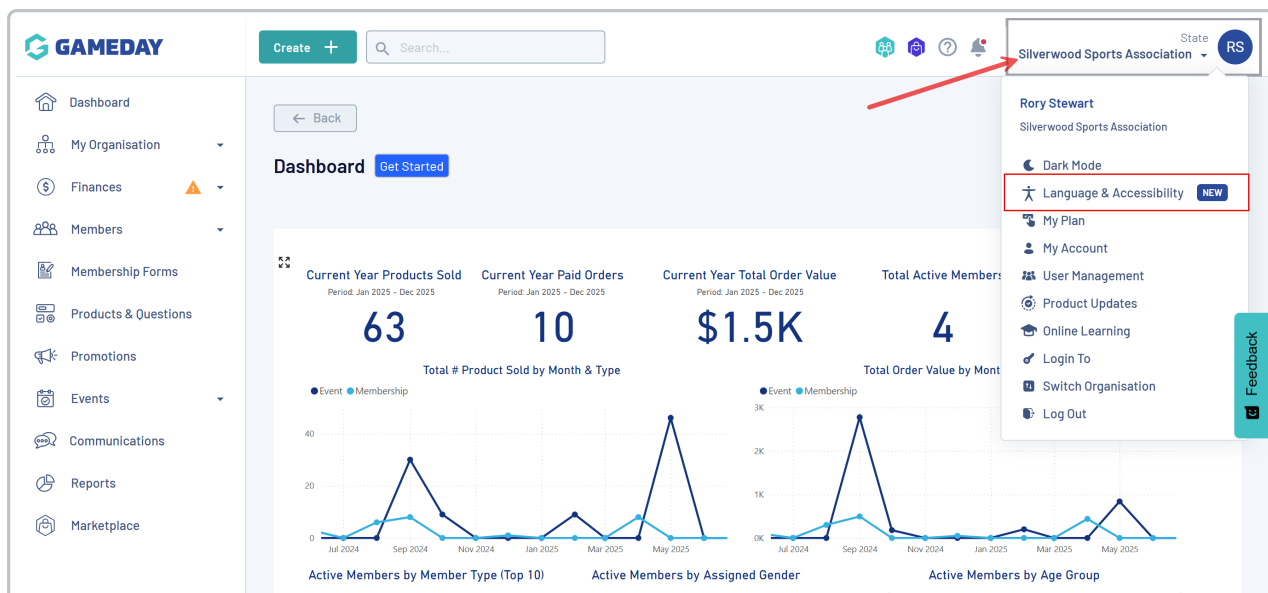
GameDay includes an integration with UserWay's Language & Accessibility widget to ensure the platform is accessible and user-friendly for everyone. This flexible tool allows administrators to customise their experience by adjusting the display, content, and navigation to suit their individual needs. Features range from simple text and contrast adjustments to advanced screen readers and dyslexia-friendly fonts.

---

[Top](#)

## Navigation

To find the Accessibility Widget, in the top-right of the header, click the **Account menu**, then select **Language & Accessibility** from the dropdown menu.



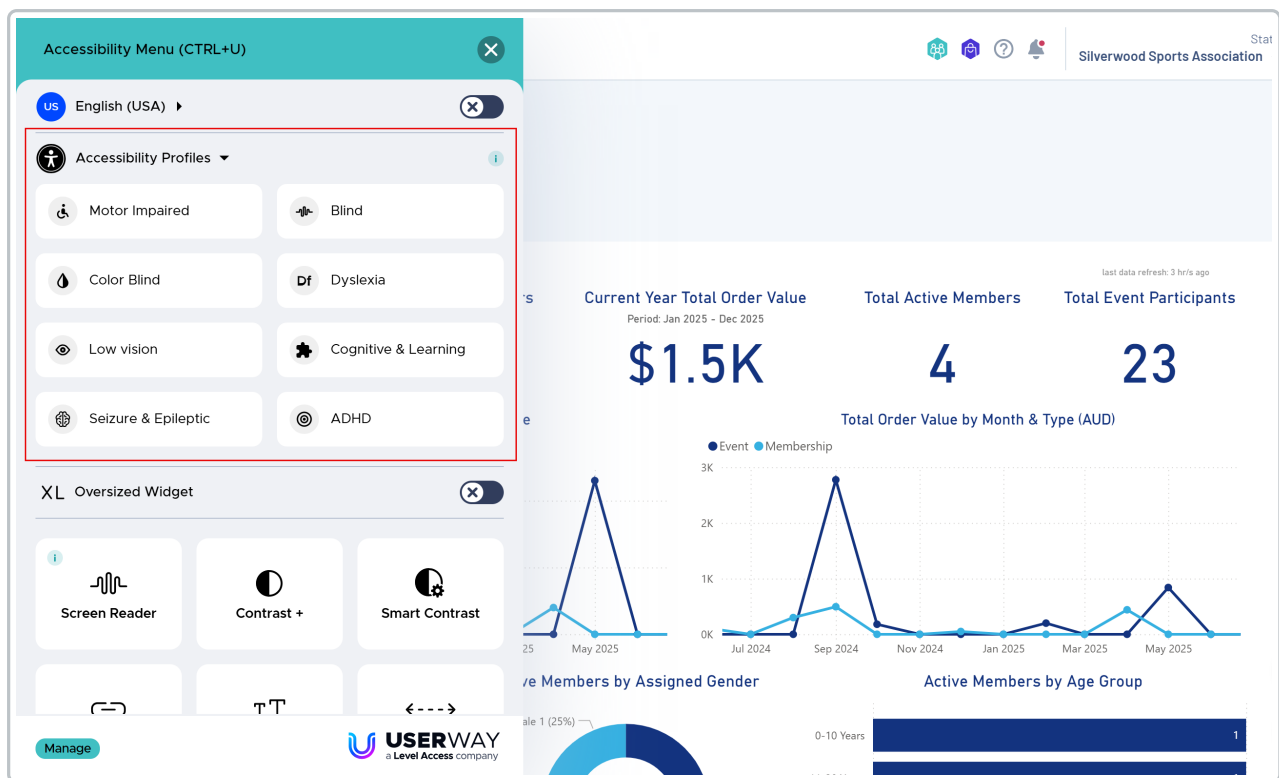
Top

# Accessibility Profiles

Accessibility Profiles provide a quick way to apply a bundle of pre-configured settings tailored to specific accessibility needs. Activating a profile will automatically enable a set of tools designed to enhance the experience for that particular requirement.

The following profiles are available:

- **Motor Impaired:** Enhances navigation using hover tooltips on key functions, and pauses flashing animations.
- **Blind:** Enables screen-reader compatibility for visually impaired users.
- **Color Blind:** Adjusts colour contrast to ensure content is distinguishable.
- **Dyslexia:** Changes fonts to be more easily readable.
- **Low Vision:** Increases content size and contrast for better visibility.
- **Cognitive & Learning:** Provides tools like a reading guide, tooltips and larger text to help with focus and comprehension.
- **Seizure & Epileptic:** Stops all flashing animations and reduces colour saturation.
- **ADHD:** Provides a reading mask to help users focus on specific sections of the page.



[Top](#)

# Individual Accessibility Tools

For more granular control, you can enable and adjust individual tools from the main widget panel. These are grouped into three main categories.

## Content & Readability Tools

- **Screen Reader:** Reads the on-screen text aloud. The reading pace can be set to **Normal**, **Fast**, or **Slow**.
- **Bigger Text:** Increases the font size across the platform for easier reading.
- **Text Spacing:** Adjusts the space between letters and words. Options include **Light**, **Moderate**, and **Heavy** spacing.
- **Dyslexia Friendly:** Switches the platform's fonts to a more legible typeface.
- **Line Height:** Increases the spacing between lines of text.
- **Text Align:** Adjusts the alignment of all text to **Left**, **Right**, **Center**, or **Justify**.
- **Dictionary:** Allows you to look up the definition of words on the page.

## Colour & Display Tools

- **Contrast:** Adjusts the site's colour scheme. Options include **Invert Colours**, **Dark Contrast**, and **Light Contrast**.

- **Smart Contrast:** Intelligently inverts the colours of specific on-screen elements rather than the entire page.
- **Saturation:** Adjusts the colour intensity of the page. Options include **Low**, **High**, and **Desaturate** (greyscale).

## Navigation & Orientation Tools

- **Highlight Links:** Makes all clickable links and buttons more prominent.
- **Pause Animations:** Stops all moving or flashing elements, such as GIFs.
- **Hide Images:** Hides all images on the page to reduce visual distraction.
- **Cursor:** Changes the standard cursor to a larger, more visible one.
- **Tooltips:** Displays text labels for certain on-screen icons and elements when hovered over.
- **Page Structure:** Displays a pop-up showing all headings, landmarks, and links on the page, allowing for quick navigation.
- **Reading Guide:** Adds a high-contrast horizontal bar that follows the cursor, making it easier to focus on one line of text at a time.

The screenshot shows a web application interface with an Accessibility Menu (CTRL+U) overlay on the left. The menu contains various accessibility tools, and the background displays a dashboard with charts and data.

**Accessibility Menu (CTRL+U)**

- Screen Reader
- Contrast +
- Smart Contrast
- Highlight Links
- Bigger Text
- Text Spacing
- Pause Animations
- Hide Images
- Dyslexia Friendly
- Cursor
- Tooltips
- Page Structure
- Line Height
- Text Align
- Dictionary
- Saturation

**Reset All Accessibility Settings**

**Manage**

**USERWAY**  
a Level Access company

**Dashboard Data:**

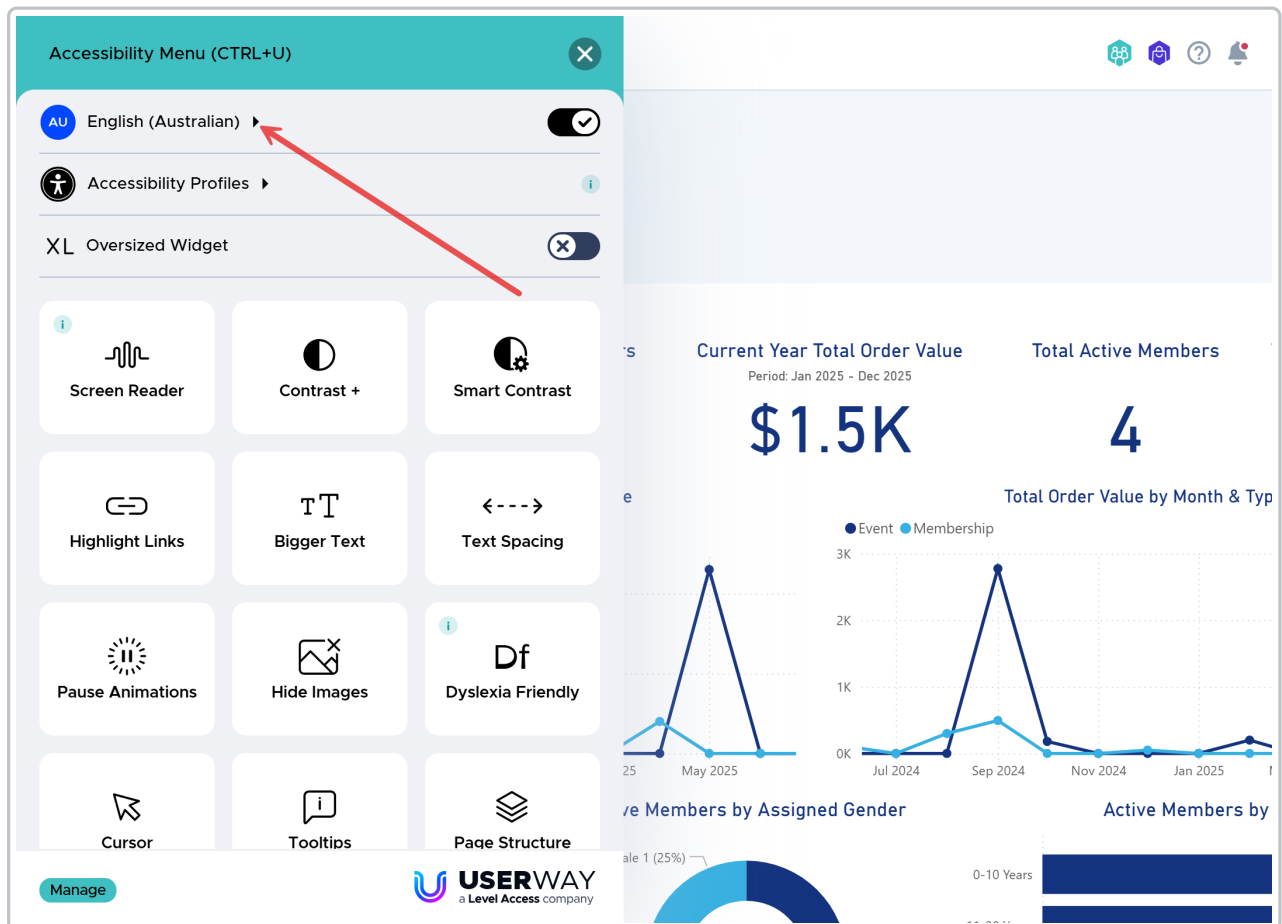
- Current Year Total Order Value:** \$1.5K (Period: Jan 2025 - Dec 2025)
- Current Year Total Order Value:** 0 (Period: Jan 2025 - Dec 2025)
- Active Members by Assigned Gender:** Female 1 (25%)

**Charts:**

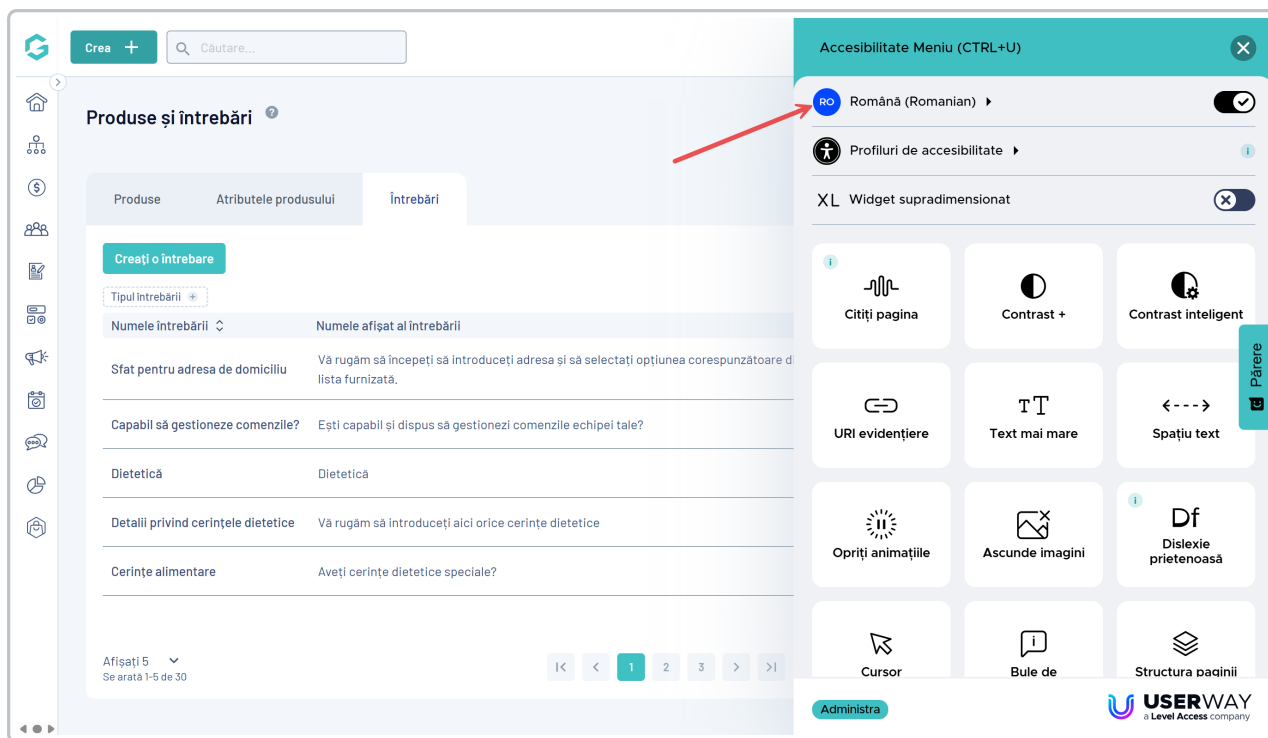
- Month & Type:** Line chart showing Event (blue) and Membership (orange) data from Jan 2025 to Sep 2024.
- Active Members by Assigned Gender:** Pie chart showing gender distribution.

# Changing Language

The widget also allows you to change the display language for the GameDay platform. At the top of the widget, click the **language dropdown** and select from the extensive list of available languages.



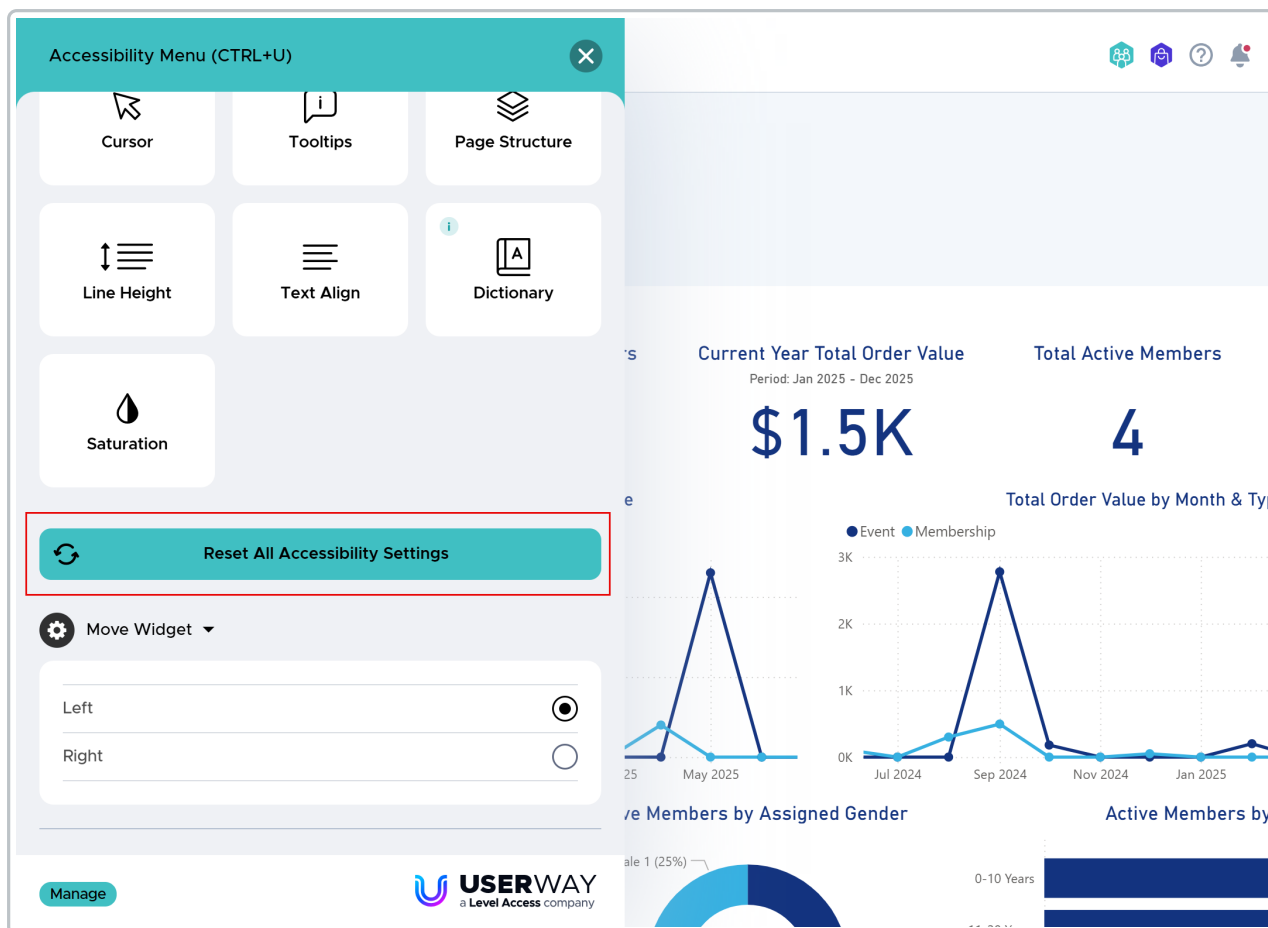
After a few seconds, the on-screen text - including on the platform and the widget itself - will instantly translate to your preferred language.



[Top](#)

## Resetting Settings

To revert all changes and return to the default view, scroll to the bottom of the widget and click the **Reset All Accessibility Settings** button.



[Top](#)

## What's Next?

Now that you understand the features of the Language & Accessibility Widget, learn more about the first steps of your GameDay experience:

[👉 Using the Resource Centre training guides](#)

[👉 How do I set up my organisation details?](#)